



Max Prefabs

Turkey



ABOUT US

For last 18 years, we focus on customer satisfaction, continues to offer the requested product and services with its innovative and experienced staff, loyal to the work schedule and by applying the right pricing strategy with the best quality.

Our Mission; We will continue our activities at a professional level, adhering to the principle of maximum energy saving technologies, new products in Turkey and in the international arena "Business Partners" to bring.

CLADDING

Fibercement decorative wall claddings with A1 Fire resistance and nature friendly.



STRUCTURE

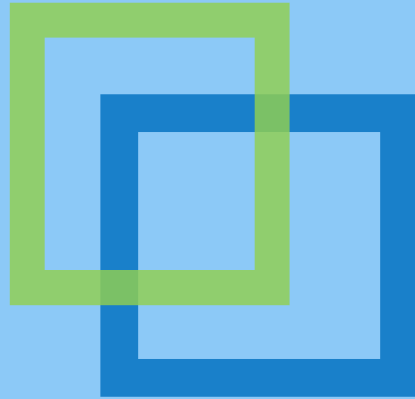
Galvanized Un-welded Light Steel Structure System used for the manufacturing of prefabricated buildings, containers and cabins.

Provides the advantages of longer durability, relocate the building from one place to another, much more durable against earthquakes.

INSULATION

Rockwool & Mineral wool insulation for the Wall and roof parts to provide better insulation against to sound and heat. A1 fire resistance.





LIGHT STEEL STRUCTURE

A new kind of living space is prepared by light steel structures. The system is based on galvanized unwelded steel technologies. As there is a standard type of single and double storey villas, there is a possibility to design and manufacture the projects which are developed by the clients.

The walls and roof are well insulated with fire rated insulation materials. The interior and exterior claddings are done by A1 fire class cement board, which does not only provides fire resistance but also providing anesthetic decoration for the applied buildings.





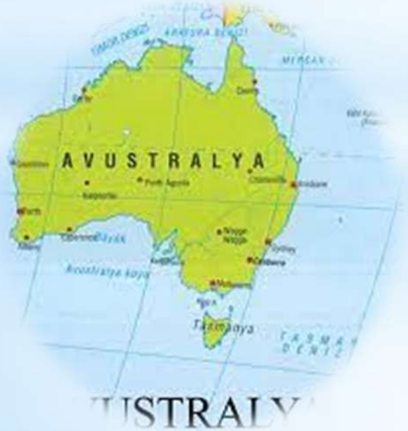
PREFABRICATED BUILDINGS

Permanent and temporary options; economical, recyclable, faster and quality solutions for your kamp requirements. Steel structured and pressed panel alternative Wall systems. A1 Class fire resistance, heat and sound insulation. Used as offices, dormitories, dining halls, laundry, ablution facilities and etc..



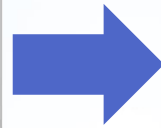


SOME REFERANCES FROM WORL WIDE





STEEL STRUCTURED VILLAS



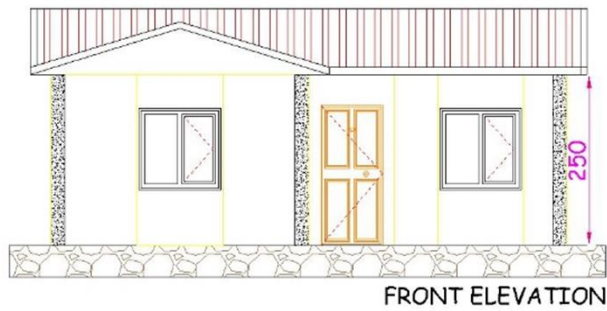


SINGLE STORIES

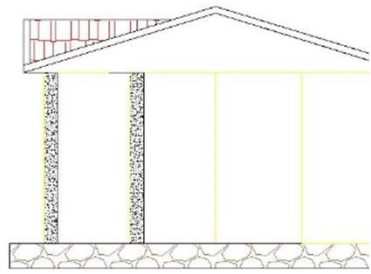




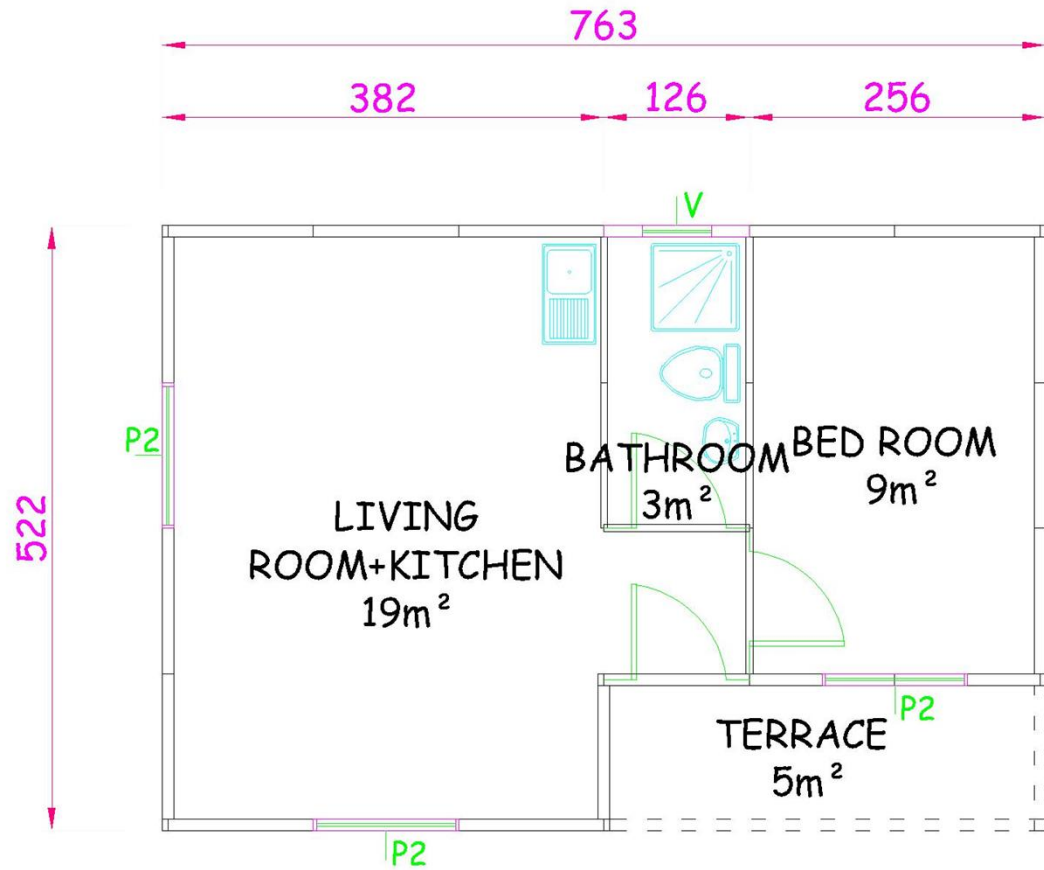
40 M2 ORCA PLAN



FRONT ELEVATION

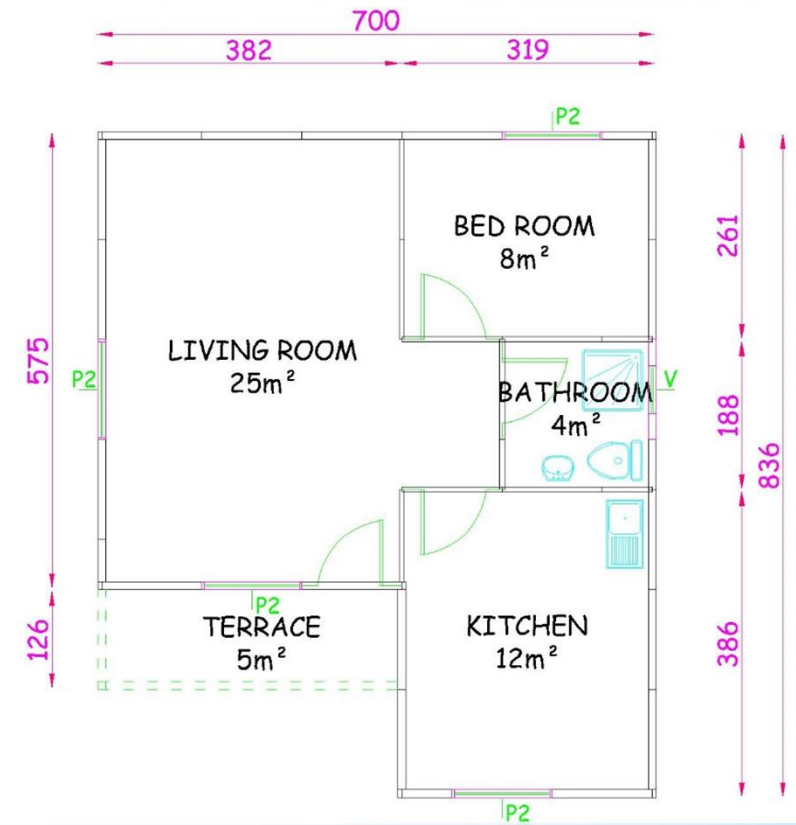
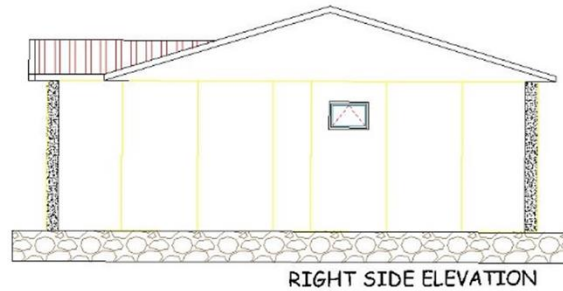
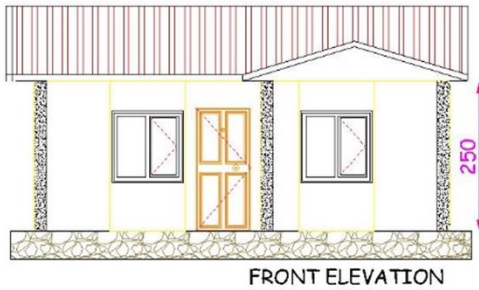


RIGHT SIDE ELEVATION





54 M2 HAVAI PLAN

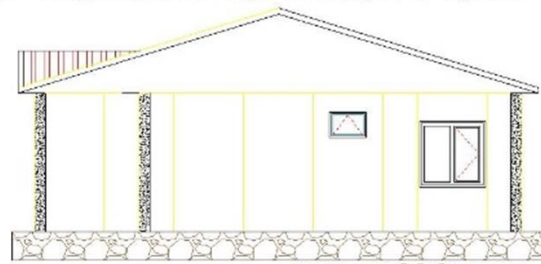




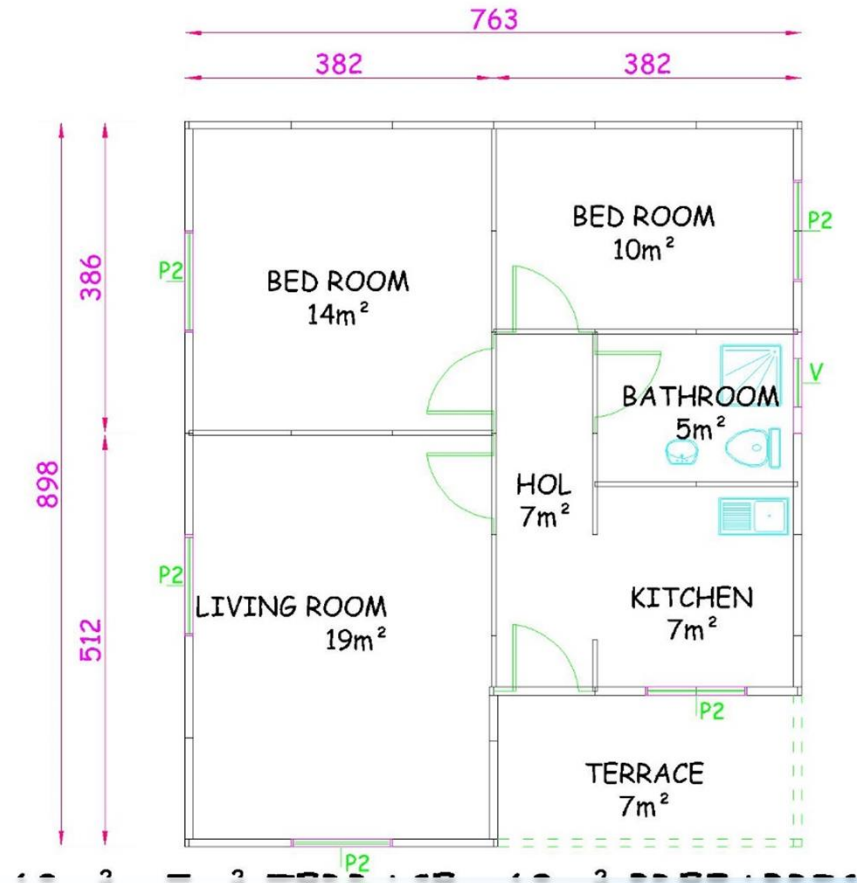
69 M2 RIO PLAN



FRONT ELEVATION

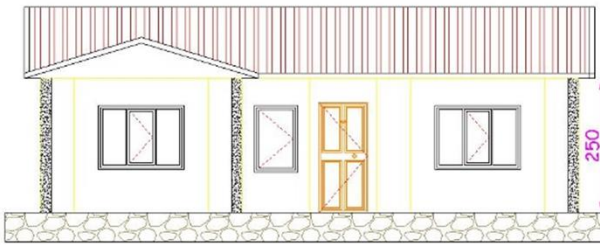


RIGHT SIDE ELEVATION

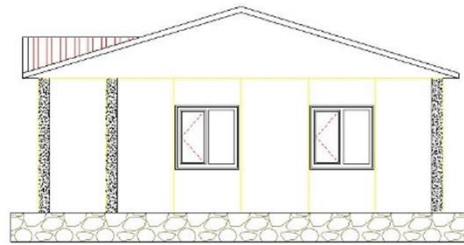




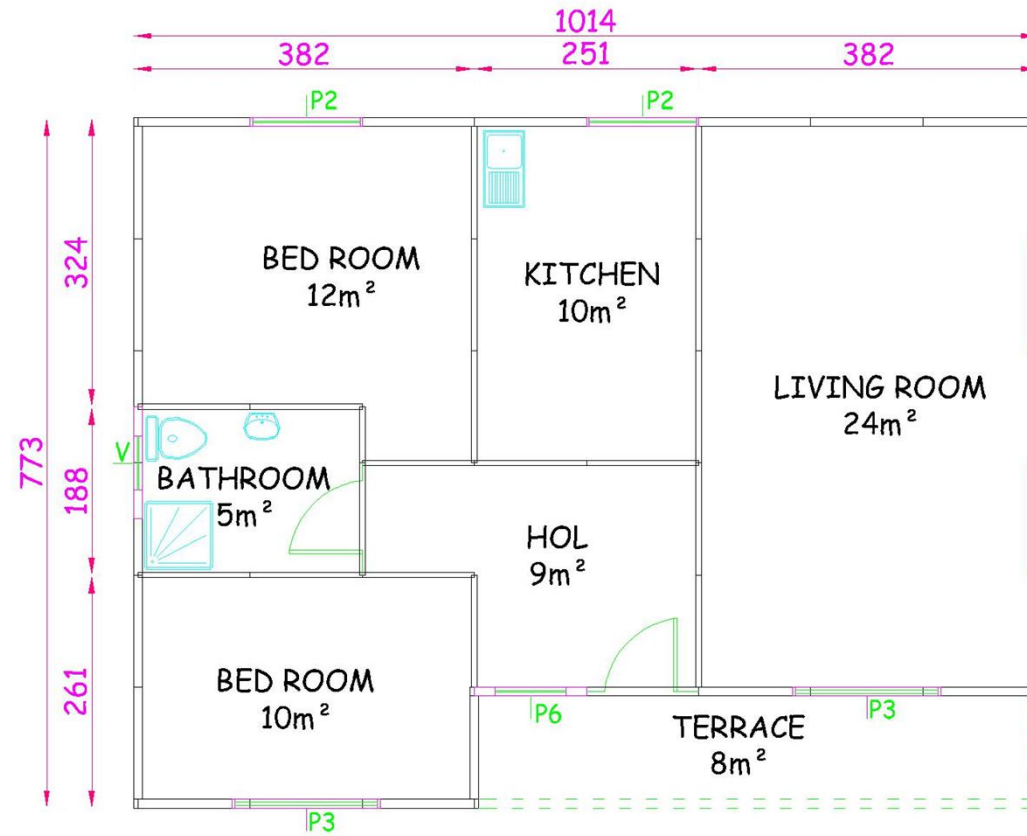
78 M2 SULTAN MODEL



FRONT ELEVATION

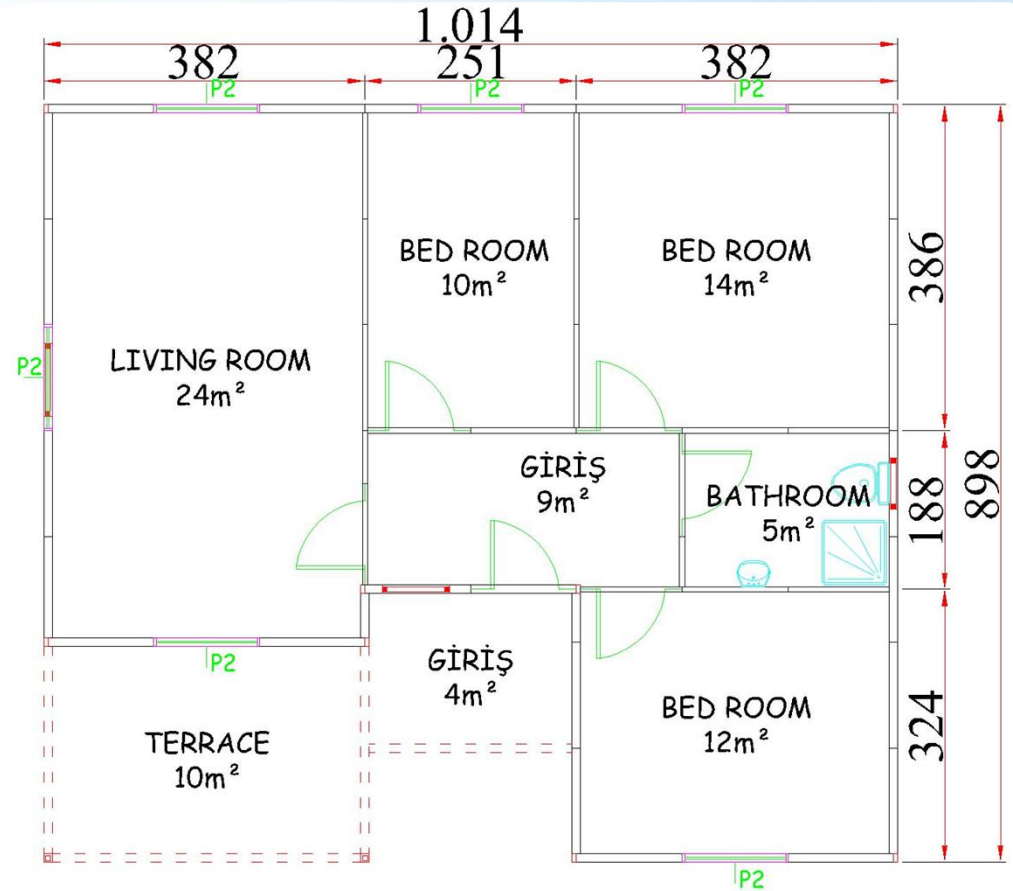
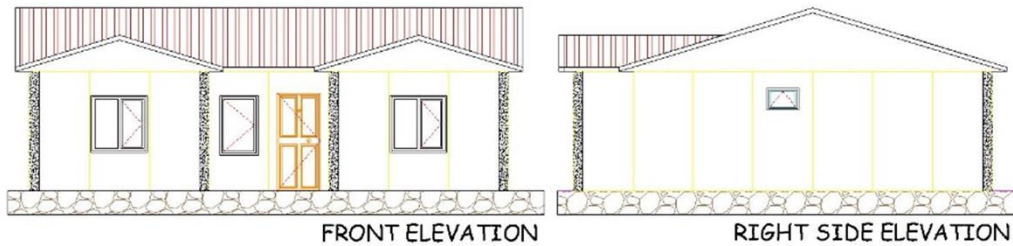


RIGHT SIDE ELEVATION



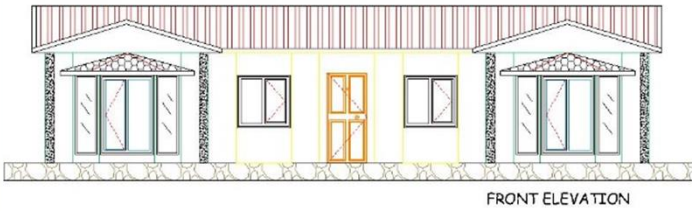


79 M2 WINTER MODEL

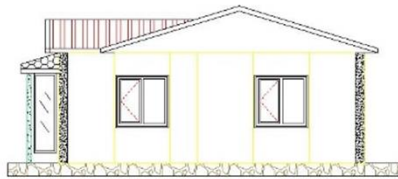




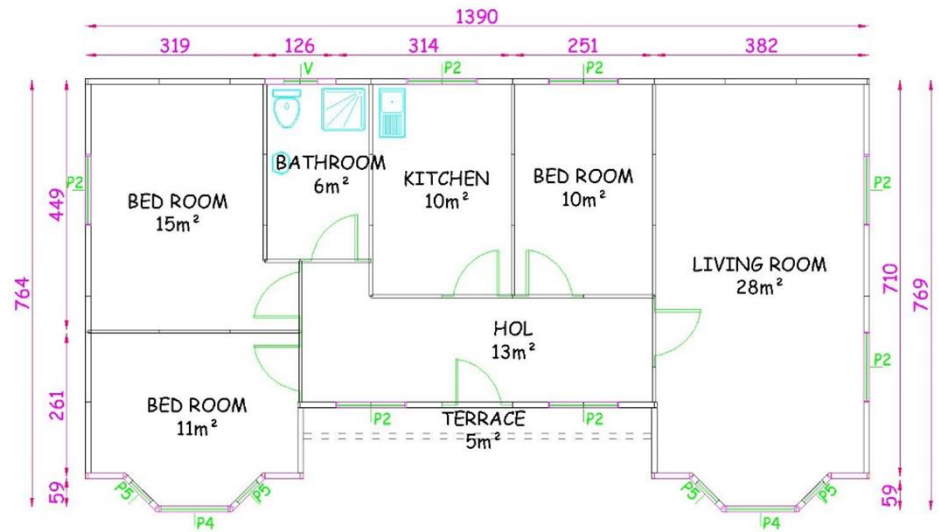
98 M2 MILLENIUM MODEL



FRONT ELEVATION



RIGHT SIDE ELEVATION

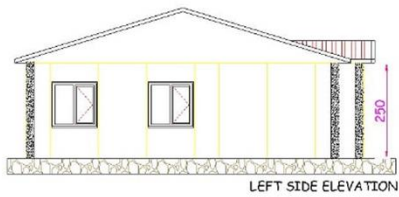


93m² + 5m² TERRACE = 98m² PREFABRICATED BUILDING PLAN

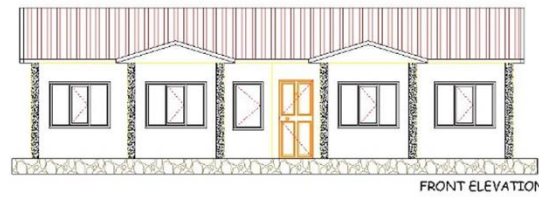
93m² + 5m² TERRACE = 98m² PREFABRICATED BUILDING PLAN



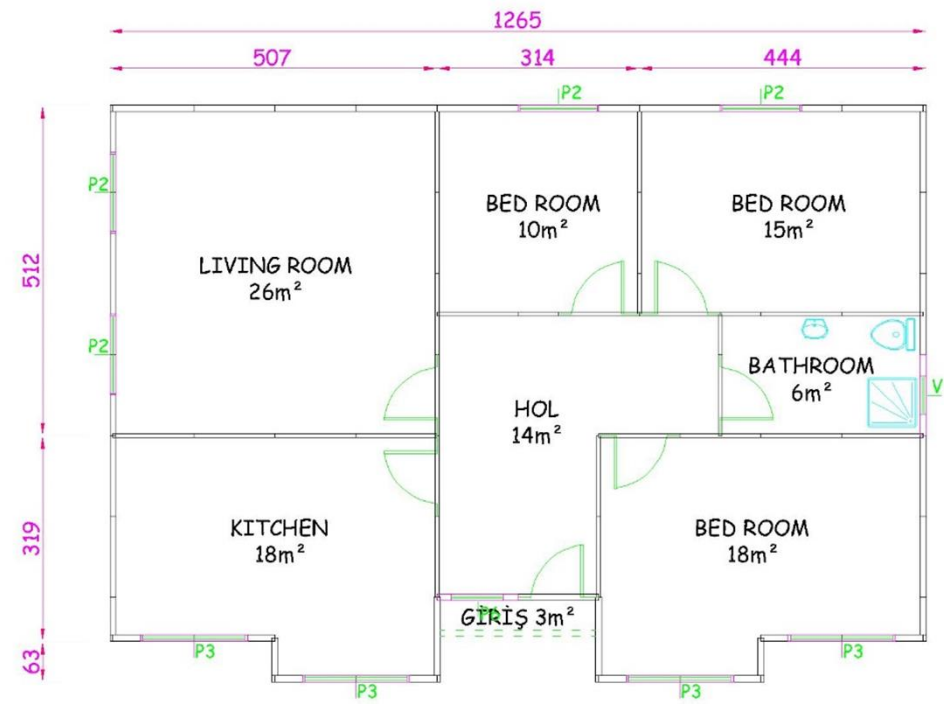
110 M2 EVEREST MODEL



LEFT SIDE ELEVATION

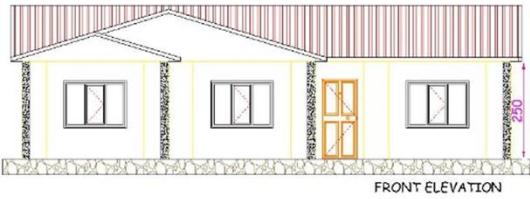


FRONT ELEVATION

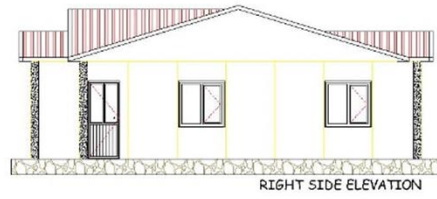




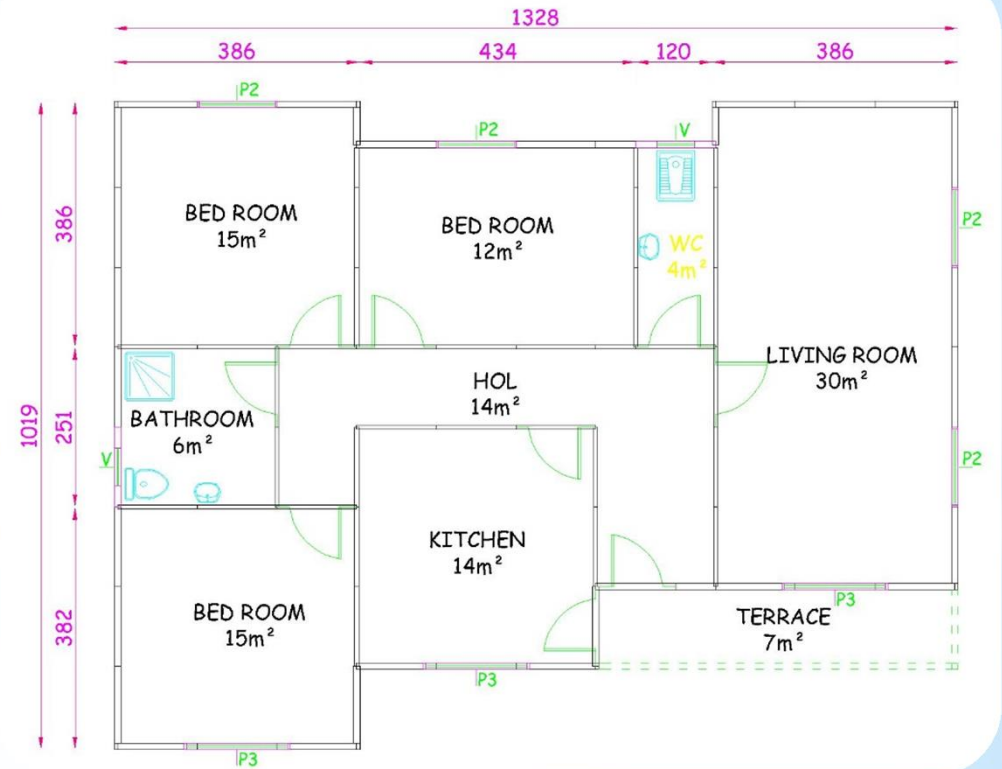
120 M2 ZIGANA MODEL



FRONT ELEVATION

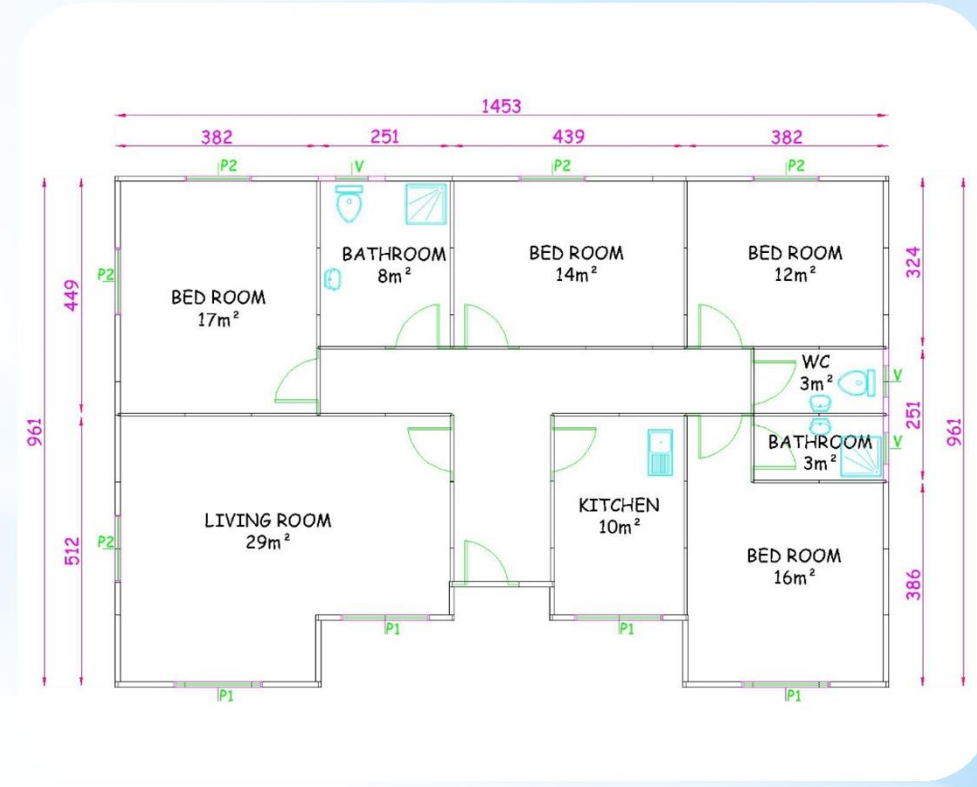


RIGHT SIDE ELEVATION





129 M2 SARKISLA MODEL



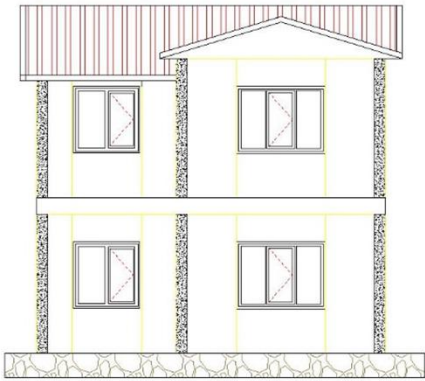


DOUBLE STORIES

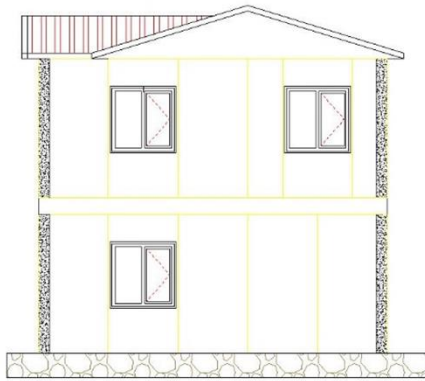




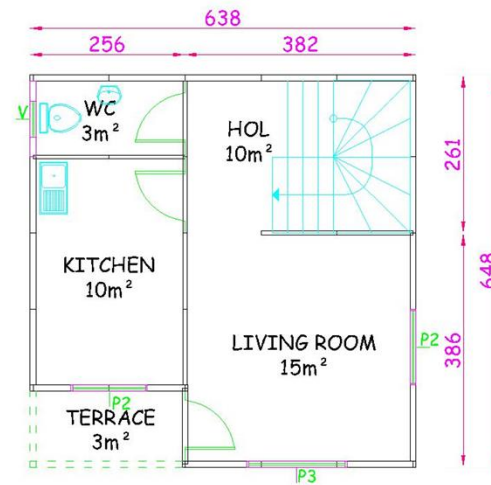
82 M2 ANATOLIA MODEL



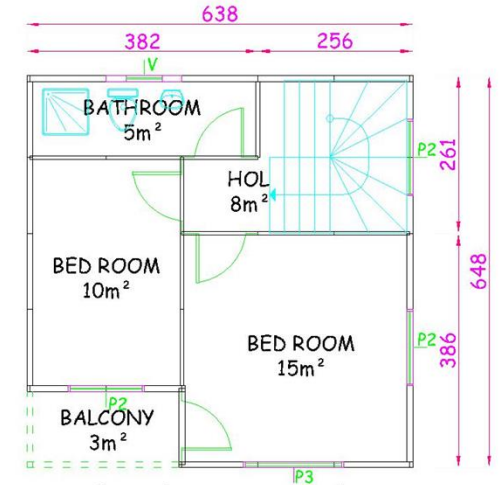
FRONT ELEVATION



RIGHT SIDE ELEVATION



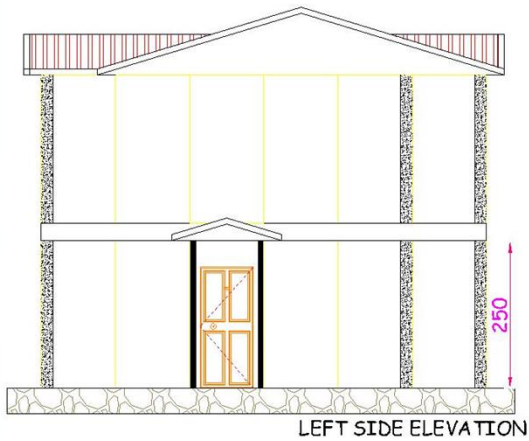
$38m^2 + 3m^2$ TERRACE = $41m^2$ GROUND FLOOR



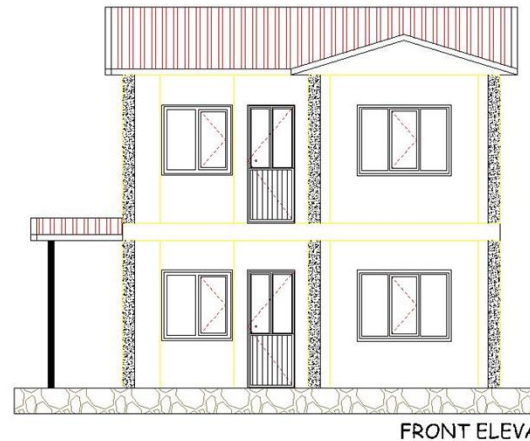
$38m^2 + 3m^2$ BALCONY = $41m^2$ 1. FLOOR



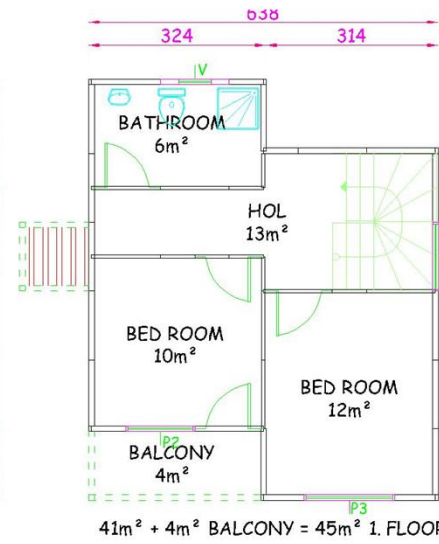
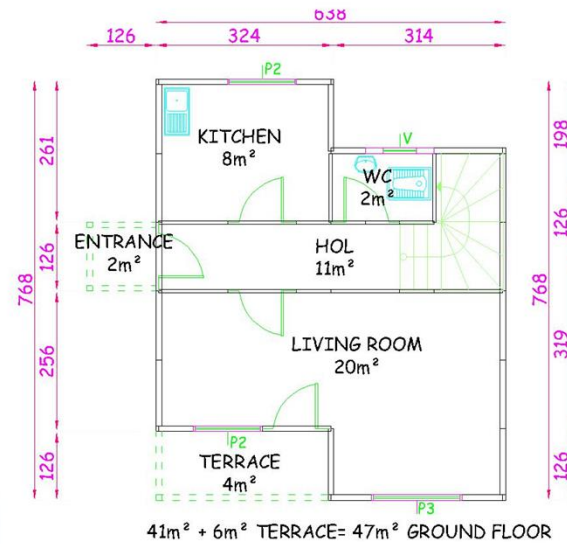
92 M2 CAFCAS MODEL



LEFT SIDE ELEVATION

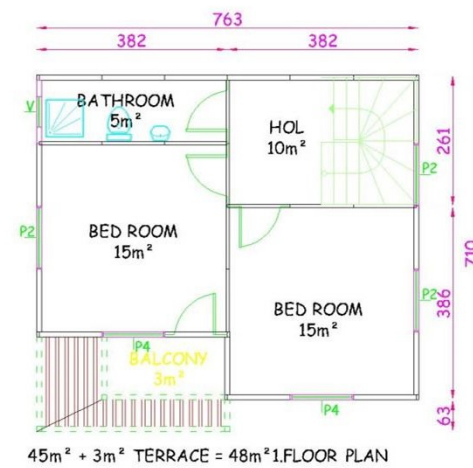
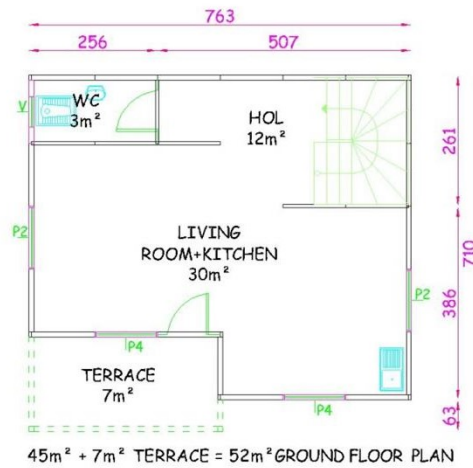
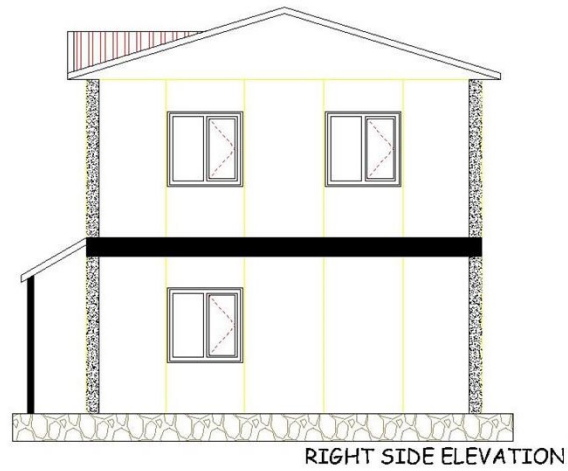
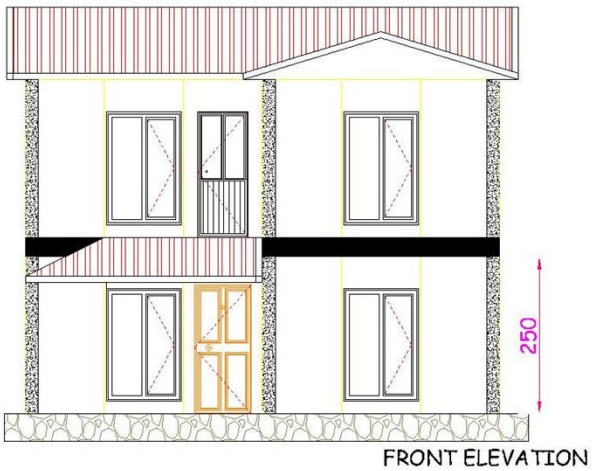


FRONT ELEVATION



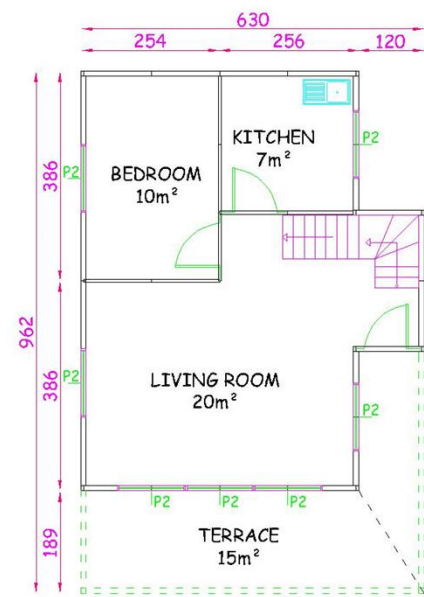
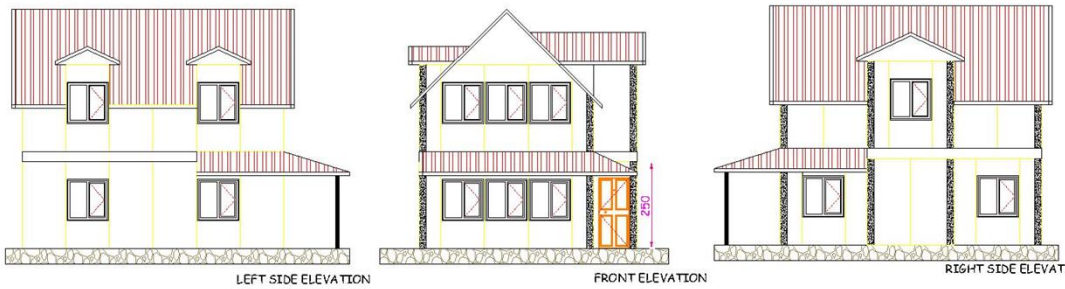


100 M2 ORCIDE MODEL

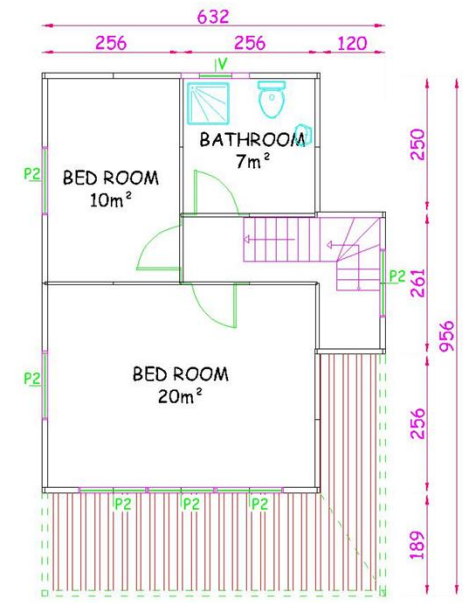




101 M2 AVANOS MODEL



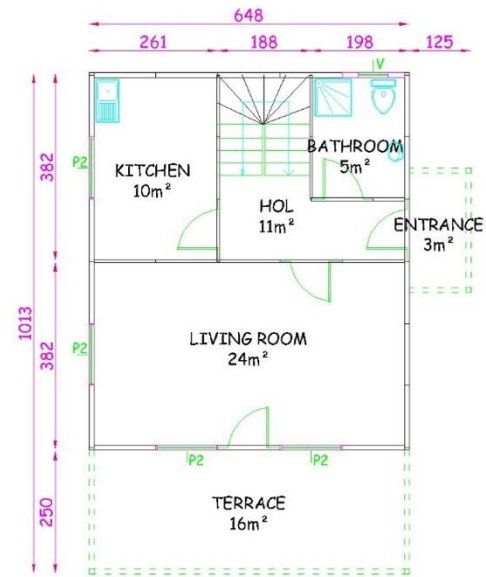
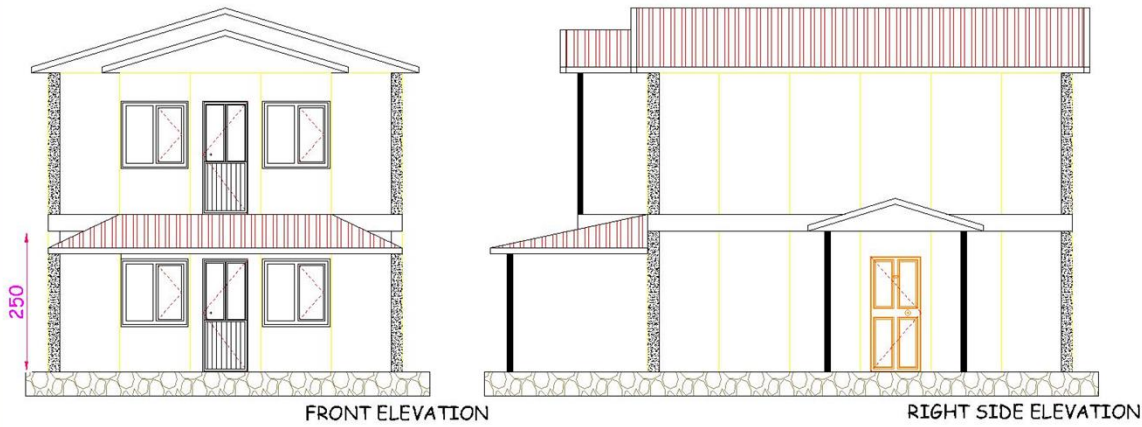
43m² + 15m² TERRACE = 58m² GROUND FLOOR PLAN



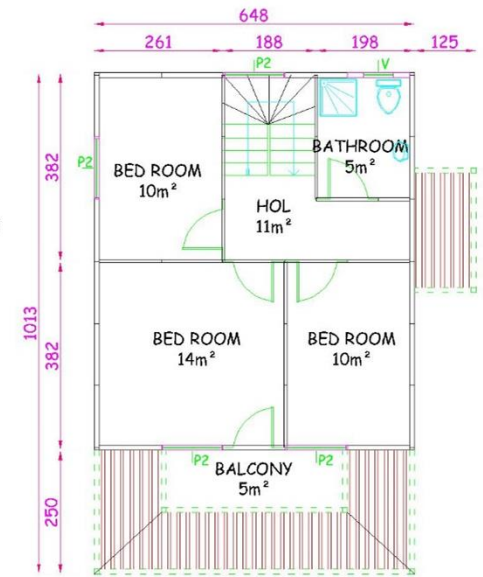
43m² 1.FLOOR PLAN



124 M2 MARDIN MODEL



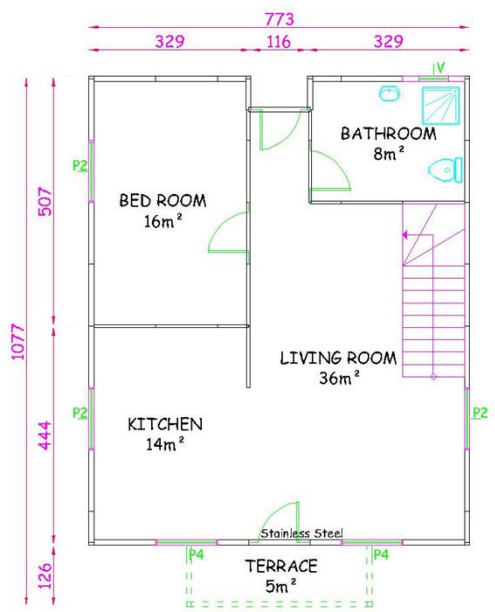
50m² + 19m² TERRACE = 69m² GROUND FLOOR PLAN



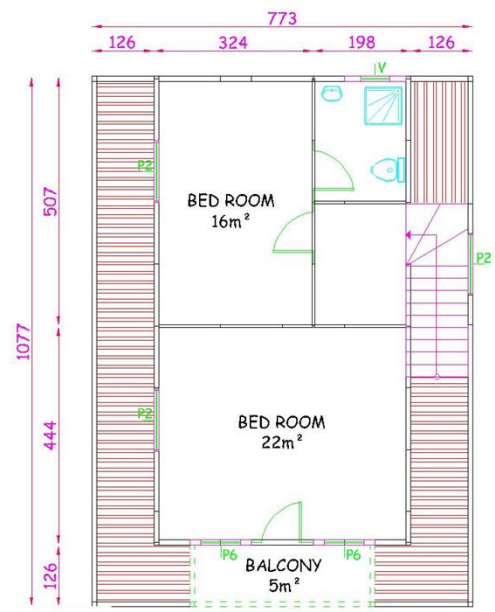
50m² + 5m² TERRACE = 55m² 1. FLOOR PLAN



134 M2 TORONTO MODEL



74² + 5m² TERRACE = 79m² GROUND FLOOR PLAN



50² + 5m² BALCONY = 55m² 1. FLOOR PLAN



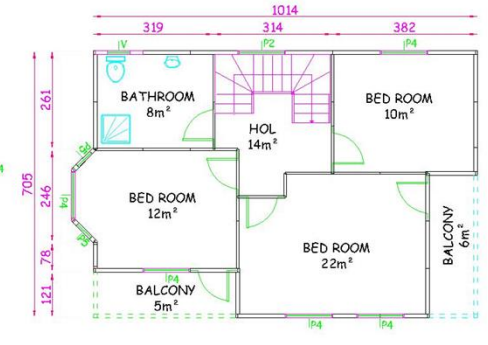
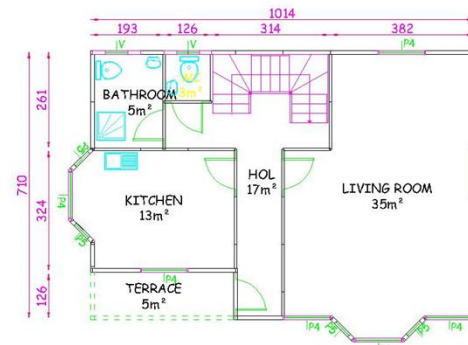
155 M2 DORUK PLAN



FRONT ELEVATION



RIGHT SIDE ELEVATION





SOME REFERANCES FOR DOUBLE STORIES





SOME REFERANCES FOR SINGLE STORIES





THANKS

For more details please contact with us via
below contact information



+90 (216) 515 90 70



+90 (530) 024 51 98



info@maxprefabs.com



www.maxprefabs.com